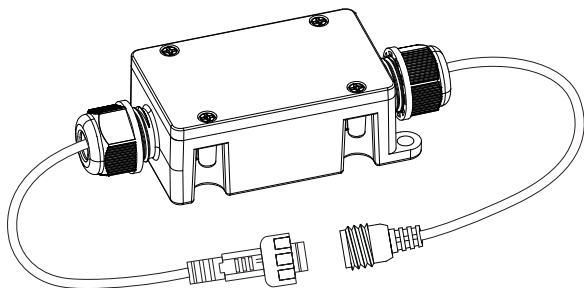


Allan Smartbox WiFi User Manual



Warning

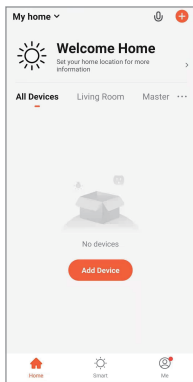
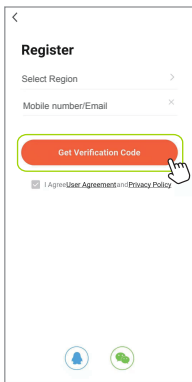
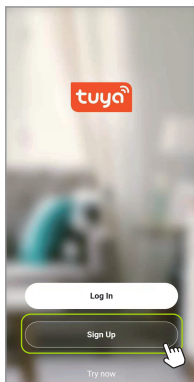
1. Make sure the power supply is DC 12V only;
2. Don't ever disassemble or repair under any circumstances;
3. When the lamp is not used for a long time, please disconnect the power supply;
4. Do not overload the circuit, otherwise it may cause electric shock or fire.

1. Download app and Register account

- a. You can download the App by searching Tuya Smart in mobile app stores or scanning the following QR code.



b. Open the APP, click “Sign Up” and create your account according to the prompt.

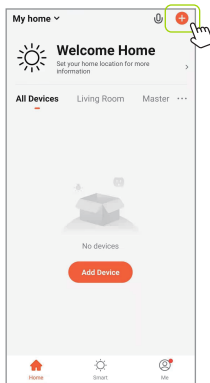


2. Fixture Connection

Note:

- Make sure the fixtures are blinking after power on, either fast or slow, if not, power ON/OFF the Smart box by 3 times till you see the blink.
- If EZ mode is not working, change to AP mode (some routers don't support EZ mode).

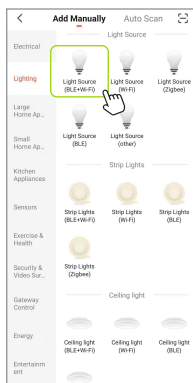
EZ Mode(Easy-Connect Mode)



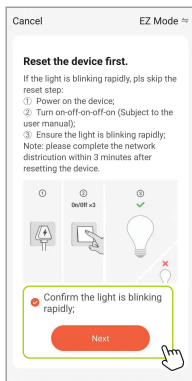
Click “+” at the home page



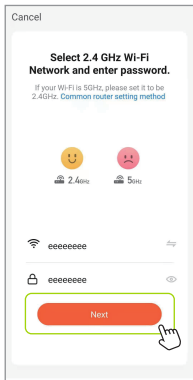
→ “Lighting”



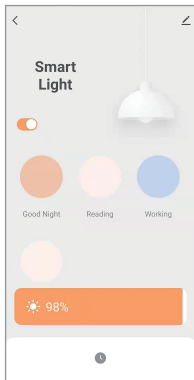
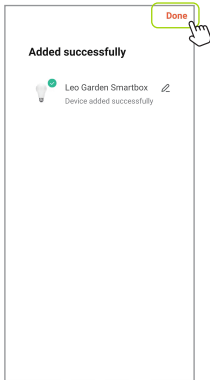
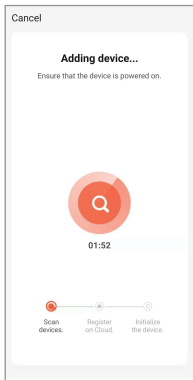
→ “Lighting Source (BLE+Wi-Fi)”



If you could see the rapid blinks from the connected fixtures, click “Confirm the light is blinking rapidly” → “Next”; If not, reset by turning Off/On by 3 times till it appears.

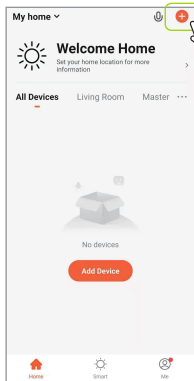


Enter your WI-FI and password, click “Next”.
Note: Only 2.4 GHz network are supported.



Click “Done” after the connecting process is completed, now the fixtures are added successfully.

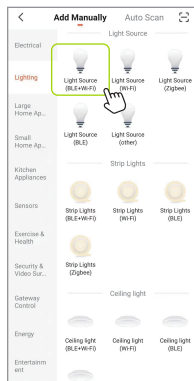
AP Mode (Access Point Mode)



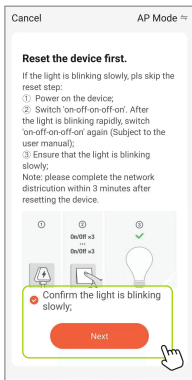
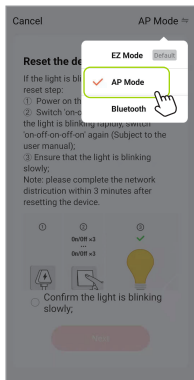
Click “+” at the home page



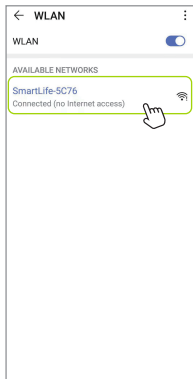
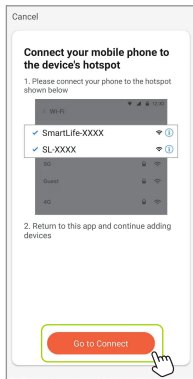
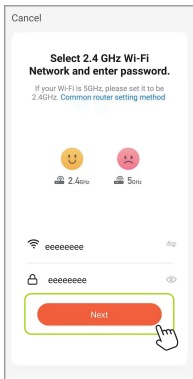
“Lighting”



“Lighting Source (BLE+Wi-Fi)”

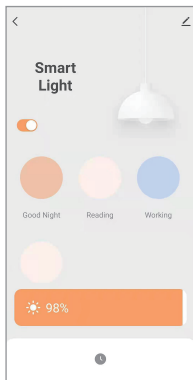
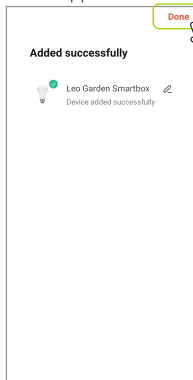
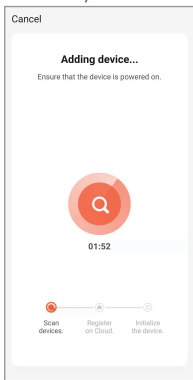


Click “AP Mode”→“Confirm the light is blinking slowly”→“Next” .
If you see the rapid blinking instead of slow ones,reset to AP mode by turning OFF/ON 3 times.



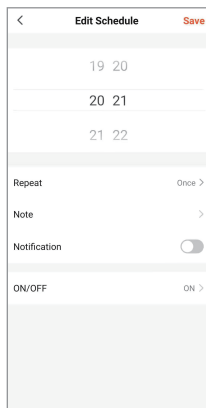
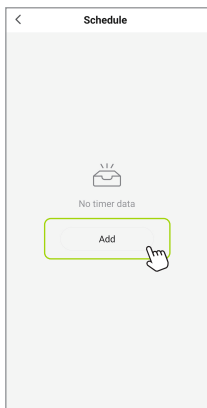
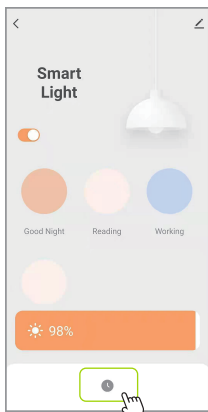
Enter your WI-FI name and password, click “Next”, you'll see the hotspot named “Smartlife-XXX” generated from the Smart box, click “Go to Connect” .

Note: Only 2.4 GHz network are supported.



Go back to TUYA app, click “Done” after the connection process is completed.

3.Edit Timer



Click on the Clock icon after the fixtures are added successfully, then you can add your schedule to decide when to turn ON/OFF of your fixtures.

llitt

Allan Smartbox WiFi