



CHATEAU INSTALLATION MANUAL

The **CHATEAU** laminate floor is designed for :

- Heavy domestic use : Bedrooms, living rooms, kitchens, entrances
- General commercial use : Classrooms, small offices, hotels, boutiques

Chateau is a unique laminate that can be installed in multiple patterns due to the exclusive Chateau locking system developed by BerryAlloc engineers :

- The “Herringbone” and “Mosaic” pattern requires 2 plank types : A-planks and B-planks. These are packed separately, so do not forget to mention to your BerryAlloc dealer that you need both types if you choose this pattern.
- The “Shipdeck” and “Ladder” pattern only require 1 plank type : the A-planks.

For a perfect result that fulfills the warranty conditions, we advise to follow the below mentioned installation instructions carefully.

1. PLANNING YOUR INSTALLATION



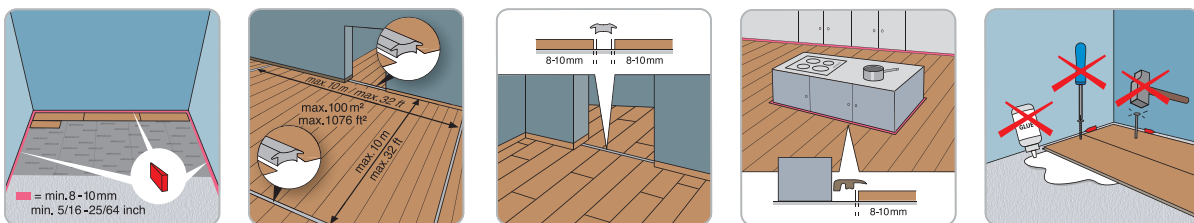
It is important to store the laminate boxes at room temperature for at least 48 hours before the installation. Do not open the packs and stack them in a way so they have maximum contact with the air. The floor should be installed at a room temperature of 18-22 °C and a relative humidity of 40-50%.

TOOLS

- Electrical or hand saw
- Spacers
- Measurer and pencil, T-square

For your safety, use protective clothing : gloves, dust mask, protective glasses.

Do not forget the matching skirtings and finishing profiles (doorways, transitions to other floors,...). And a suitable BerryAlloc underlay or moisture barrier depending on the situation (not for glued installations Ladder and Mosaic).



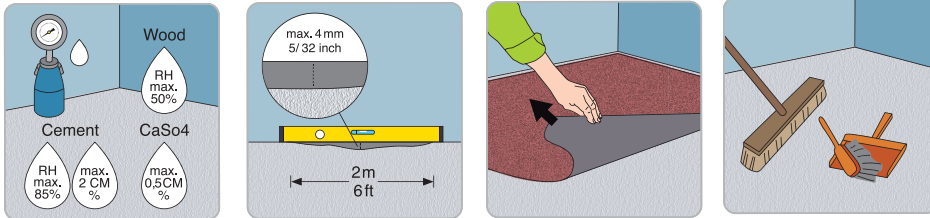
Chateau in the ‘HERRINGBONE’ and in the ‘SHIPDECK’ pattern should be installed as a floating floor which means that the floor should be able to move :

- Do not screw or glue the floorboards to the subfloor.
- Do not install laminate floor under fixed constructions such as kitchen cabinets or built-in closets
- Leave a 8-10mm expansion gap to walls and other fixed constructions so that the flooring can move.
- Always install expansion profiles in doorways.
- In areas which do not join symmetrically and when the room length/width exceeds 10m, install expansion profiles

Two floor patterns in the Chateau range are an exception to the above rule, as they should be **glued to the subfloor** : the "LADDER" and the "MOSAIC" pattern (details see below). This means no expansion gaps are necessary for these patterns, the laminate floor is fixed to the subfloor!

2. PREPARING THE SUBFLOOR

BerryAlloc laminate can be installed on most hard subfloors, e.g. chip/plasterboards, PVC or concrete (be sure that the existing subfloor construction is fixed).



The subfloor must be totally dry:

- Wooden and wood based material, max. 50 % relative humidity
- Concrete and light concrete floor, max. 2,0 CM % (1,8 CM % if floor heating)
- Plaster and plaster based floor, max. 0,5 CM % (0,3 CM % if floor heating)

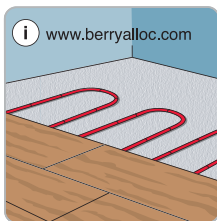
The subfloor has to be even (max. height difference of 4mm per 2m). Sharp edges must be smoothed and holes filled. This is important because an uneven subfloor can cause squeaking noises.

Soft material like a wall-to-wall carpet needs to be removed.

Clean the subfloor before you start the installation.

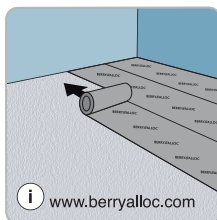
On an existing wooden floor, BerryAlloc laminate should be installed across the old floorboards.

3. FLOOR HEATING / COOLING



If you have a subfloor heating system, be sure to read our separate [manual for installing laminate on top of floor heating](#).

4. UNDERLAYS



We recommend to install your laminate with a BerryAlloc underlay that suits your situation : reduce footfall noise, floor heating compatible,....

BerryAlloc underlays are specially developed for our floors, and with the same high quality standards, to ensure a perfect result. Please check our [underlay guide](#) for more info.

For the "LADDER" and the "MOSAIC" installation, we recommend to glue the laminate to the floor, so NO underlay is needed.

5. INSTALLING YOUR CHATEAU FLOOR

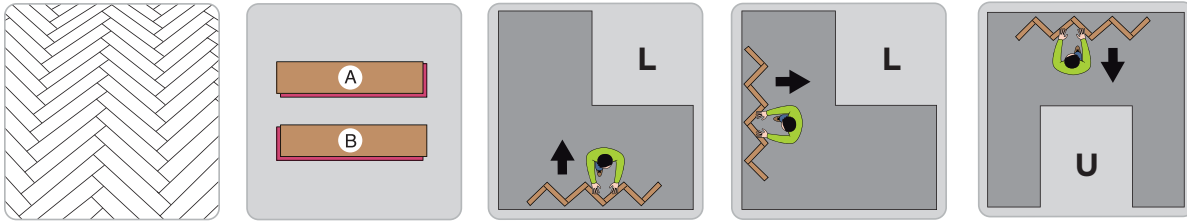


Check all planks for visible defects in optimal light conditions, both before and during installation. Planks with defects must not be used.

For the most natural floor pattern, make sure to mix the designs of the planks across the floor.

Chateau is a dream floor for creative installers. Multiple patterns are possible, and a wide variety of colors allows you to mix and match, and add some personality to your royal floor: **HERRINGBONE**, **SHIPDECK**, **LADDER** and **MOSAIC**.

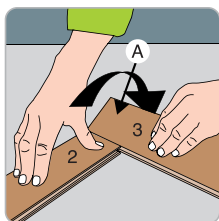
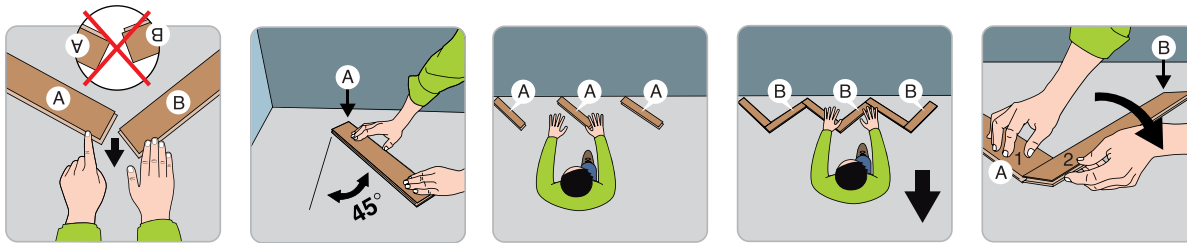
5.1 THE HERRINGBONE PATTERN



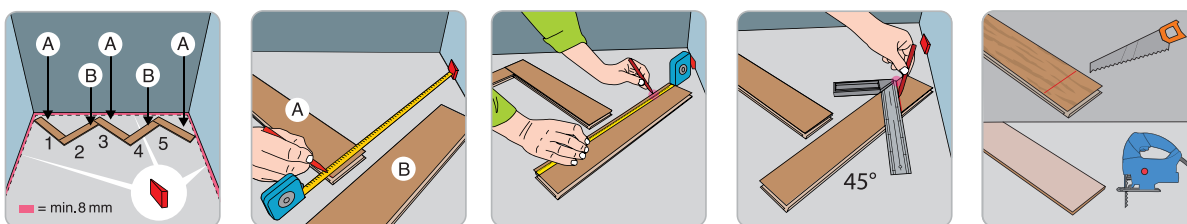
For the herringbone pattern, you need 2 plank types : A-planks and B-planks. When you take a plank and turn the long side groove side towards you, the groove continues on the **RIGHT** side for the A-planks and on the **LEFT** side for the B-planks. Always make sure the grooves are pointing towards the laying direction.

All planks are marked with "A" or "B" in the backprint.

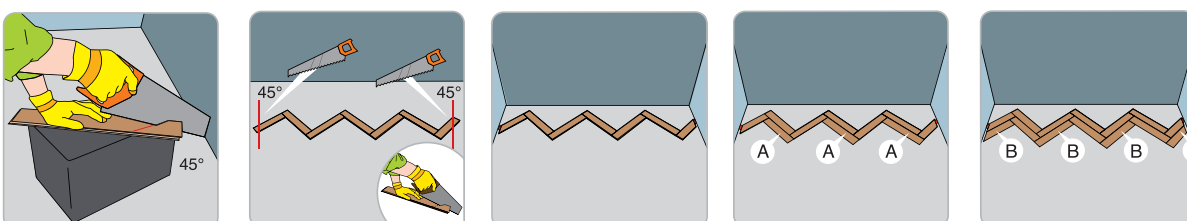
Consider the shape of your room when you choose your start wall. For L- or U-shaped rooms, please check the drawings.



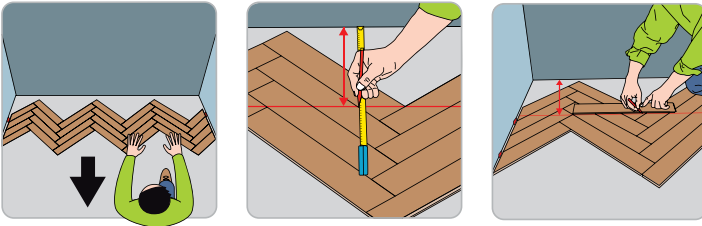
Start with a row of A-planks in 45°, and then connect them with B-planks to finish a first row.



Consider the expansion gap at the sides, when measuring the size of the last plank in the row. If using a hand saw, cut on the pattern side, if using an electrical jigsaw, always cut on the back side of the plank. A sharp saw blade is a must for the best result!



Continue with a row of A-planks and then a row of B-planks, until you have at least 4 rows.

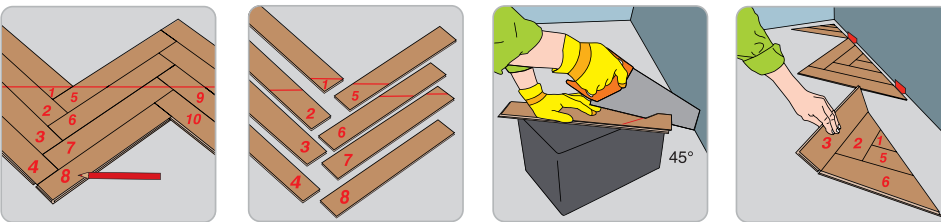


Shift the installed floor towards the starting wall and draw a straight cutting line across the whole row, parallel to the wall.

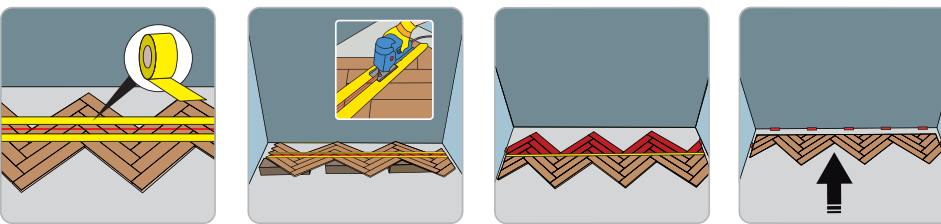
Now you have 2 options :

1. Put numbers on the planks before you unlock them and cut each plank separately.
Then put them back in the right order against the wall.
2. Use tape to keep the planks together on both sides of the cutting line.
Put blocks under the row to lift the planks and cut them. Shift the floor against the wall.

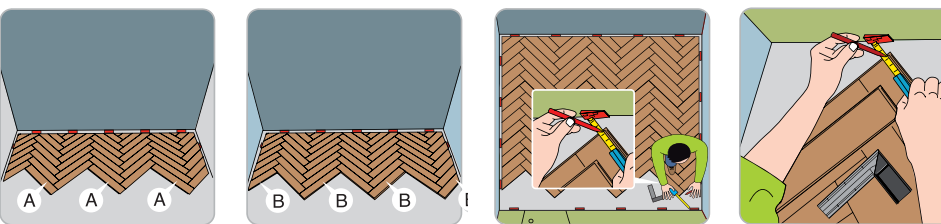
Option 1



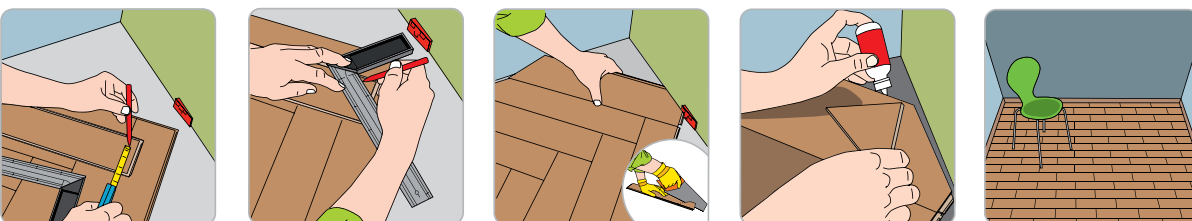
Option 2



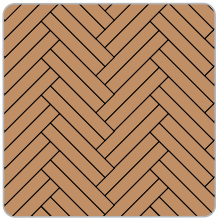
Continue with the installation row per row : a series of A-planks, and then a series of B-planks.
In the last row, you will have to cut the planks again. Measure the distance from the wall to the corner of the plank, where the laminate design ends. Consider the expansion gap!



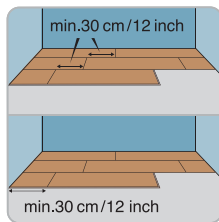
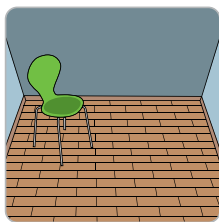
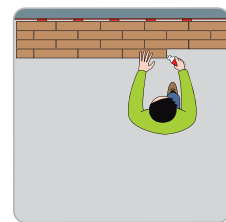
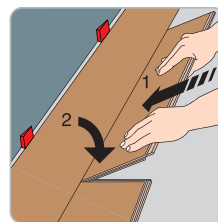
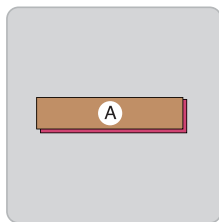
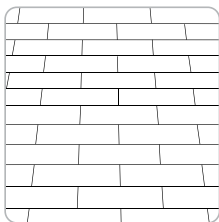
Take a plank and put it in the right direction (groove side towards the end wall). Mark the distance you have measured, and draw a line in a 45° angle. Cut the plank and install it. We advise to use glue on the grooves of very small pieces.



You can also install a double herringbone pattern in the same way.



5.2 THE SHIPDECK PATTERN

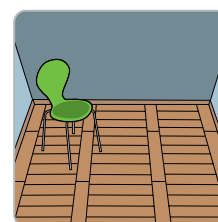
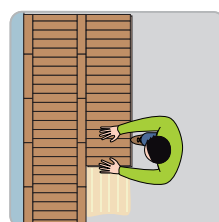
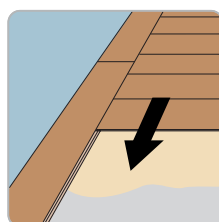
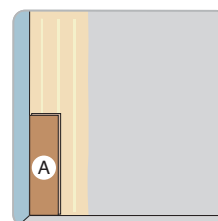
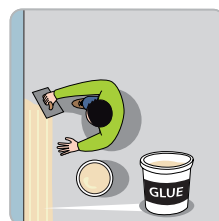
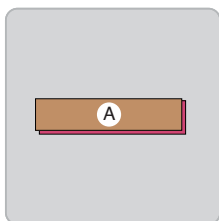
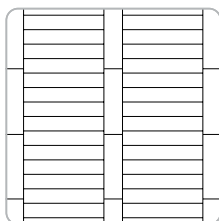


If you choose the shipdeck pattern, you only need the A-planks. Put a first plank in the corner of the room with groove side pointing towards the direction of the installation. Apply glue to the short side of every plank before you install it. Make sure the joints of the planks are staggered 1/3 of their length.

5.3 THE LADDER PATTERN

Chateau can also be installed as a ladder pattern, but then it has to be fully glued to the subfloor. This means no underlay has to be used, and no expansion gaps are needed, the floor is fixed. Choose a high quality parquet glue for the best result.

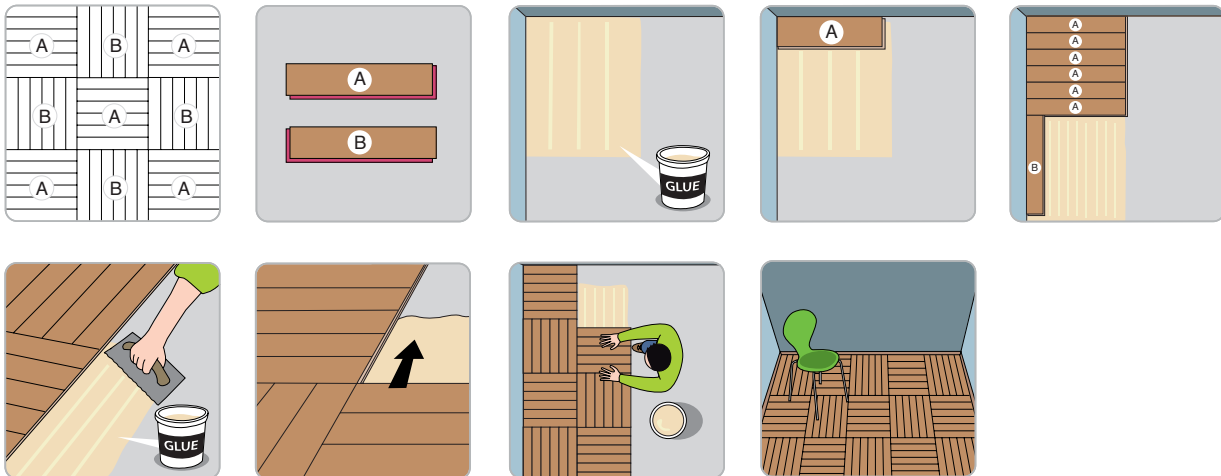
For this pattern, you only need A-planks. Carefully spread the glue on the subfloor and place a plank in the corner with the groove pointing towards you. Start with a first row against the wall and then continue with the ladder 'steps' in the opposite direction, groove pointing towards the laying direction.



5.4 THE MOSAIC PATTERN

For the classic Mosaic pattern, you need both plank types, A and B. This pattern is fully glued to the subfloor so no underlay or expansion gaps are necessary.

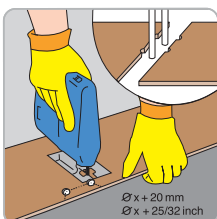
Spread the glue and start with an A-plank, with the groove pointing towards the laying direction. Install 6 A-planks. Then switch the direction and continue with the 6 B-planks, groove always pointing in the laying direction. Continue this fully glued installation square by square, row by row.



Doorframes and heating pipes



Wooden doorframes should be shortened enough to make a plank and underlay fit underneath. Lay a panel face down next to the door frame. Saw the panel, then slide the plank under the door-frame. Keep an expansion gap under the door-frame of 8-10mm!



If you have heating pipes, measure their exact position and mark it on the laminate. Add 20mm to the dimension of the pipe, because the laminate has to be able to move in all directions around the pipe. Saw from the drilling holes to the side of the laminate in an angle of 45° and put the laminate in place.

6. A PERFECT FINISH

BerryAlloc offers a wide range of accessories with a timeless design for the finishing touch :

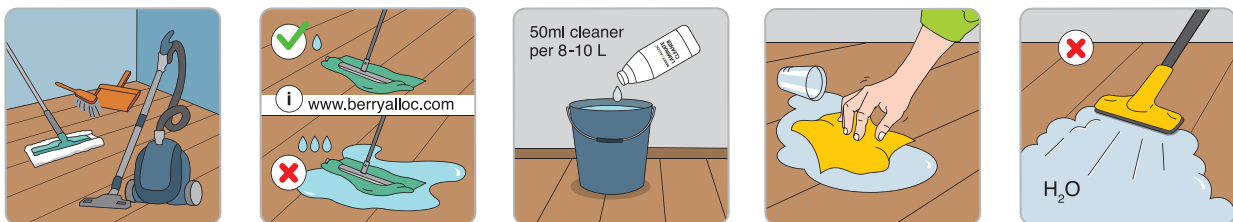
- Skirtings 6cm and 8cm
- Quarter rounds
- Floor profiles : T-profile, reducer, end profile
- Aluminium floor profiles

Paintable white skirtings are also available and can be used unpainted, or they can be painted in the same colour as your wall.

When installing accessories, always keep in mind that the floor has to be able to move. This means :

- Skirtings should never be attached to the floor, they can be fixed to the wall with clips or in case your walls are not straight, use the BerryAlloc glue to glue the skirting to the wall.
- After you have installed a skirting or profile, do not seal/fix it to the laminate with sealant. The movement of the laminate will cause cracks in the sealing product which makes the sealant ineffective and unesthetic.
- Joints on fixed building elements (door frames, heating pipes, etc.) should never be completely sealed with elastic filler. Use a Fillertwine first and then finish with elastic filler, this allows the floor to move.
- Profiles, doorstops and suchlike should not be screwed through the laminate into the subfloor.

7. CARE AND MAINTENANCE



A laminate floor is very easy to clean :

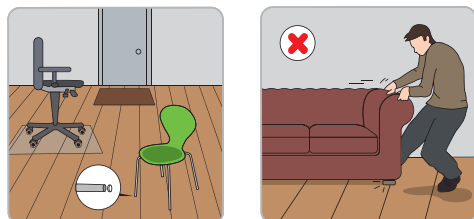
DRY CLEANING : with a brush, mop with dry wipes or vacuum cleaner

WET CLEANING with a well wrung-out cloth – avoid using too much water!

Clean up any spilled liquids immediately.

We strongly recommend to use the BerryAlloc laminate cleaner, it's specially developed to clean our laminate floors and leaves no traces.

Never use steam cleaners on laminate.



Put doormats at every entrance to protect your laminate from dirt and sand.

Lift heavy furniture and put felt pads on the legs of your chair. Use a protective floor mat under your castor chair.

Laminate can not be polished or treated with products that contain wax or oil.

For more details : read our [care and maintenance manual](#)

8. WARRANTY

By following the above mentioned instructions you will extend the longevity of your laminate flooring and ensure the validity of the warranty.

We refer to our warranty conditions or warranty policy for more info.

ENJOY YOUR BERRYALLOC FLOOR!