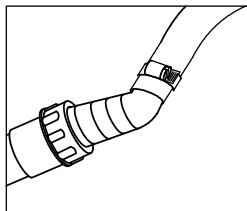
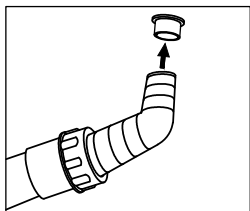
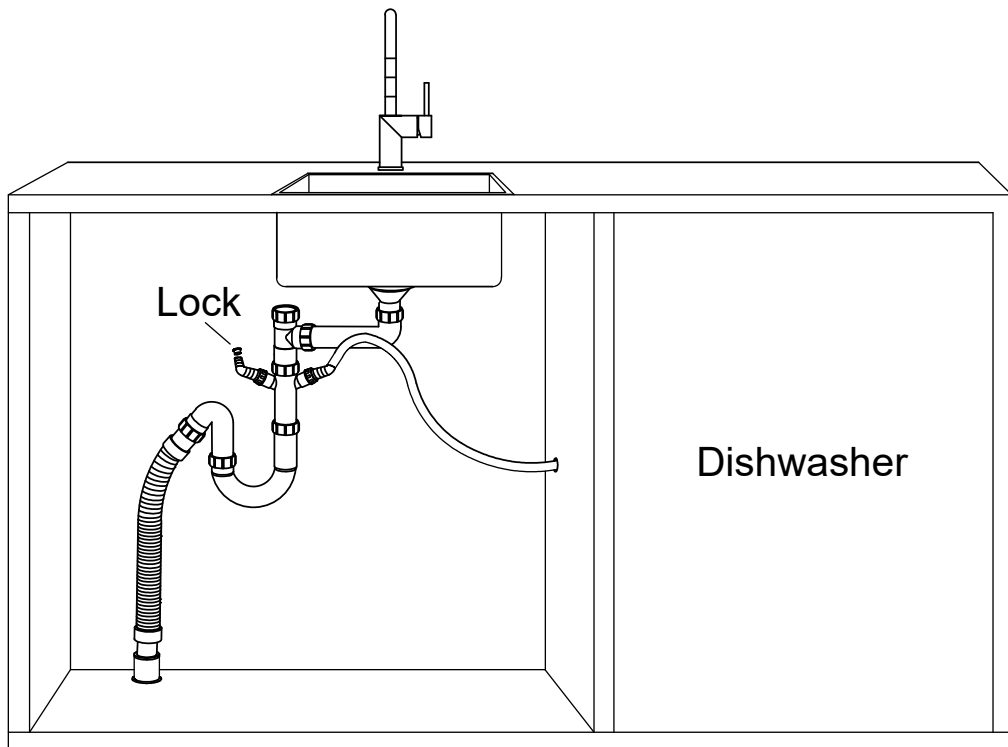


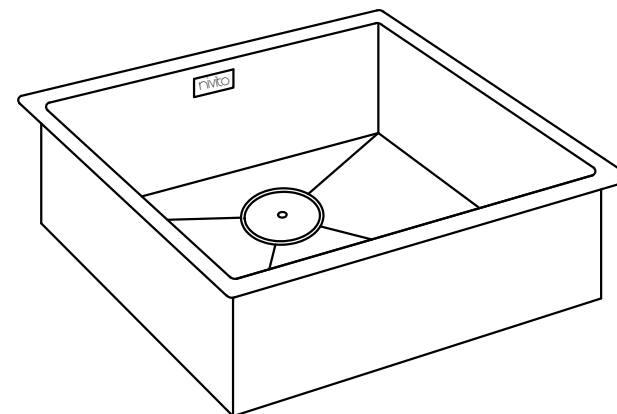
## Connect supplies & drain fittings



Connect the sink drain, trap and waste fittings. Attach water supply and turn on the water and check for leaks. Fill the sink with water and check for possible leaks around the drain flange (s). Release water from the sink and check for possible leaks at drain connections or disposer connections. Correct any joints that leak.

# nivito™

## INSTALLATION MANUAL



Flush-Mount



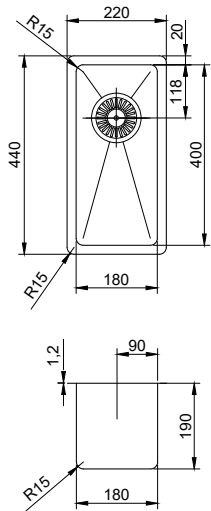
Top-mount



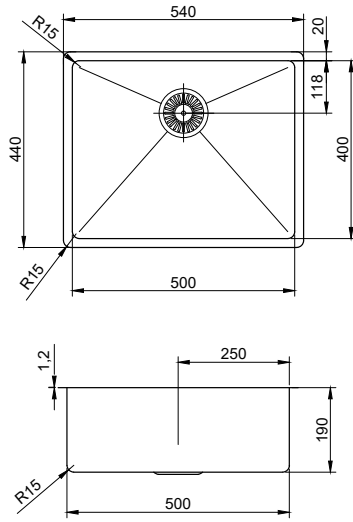
Undermount

## Cube.

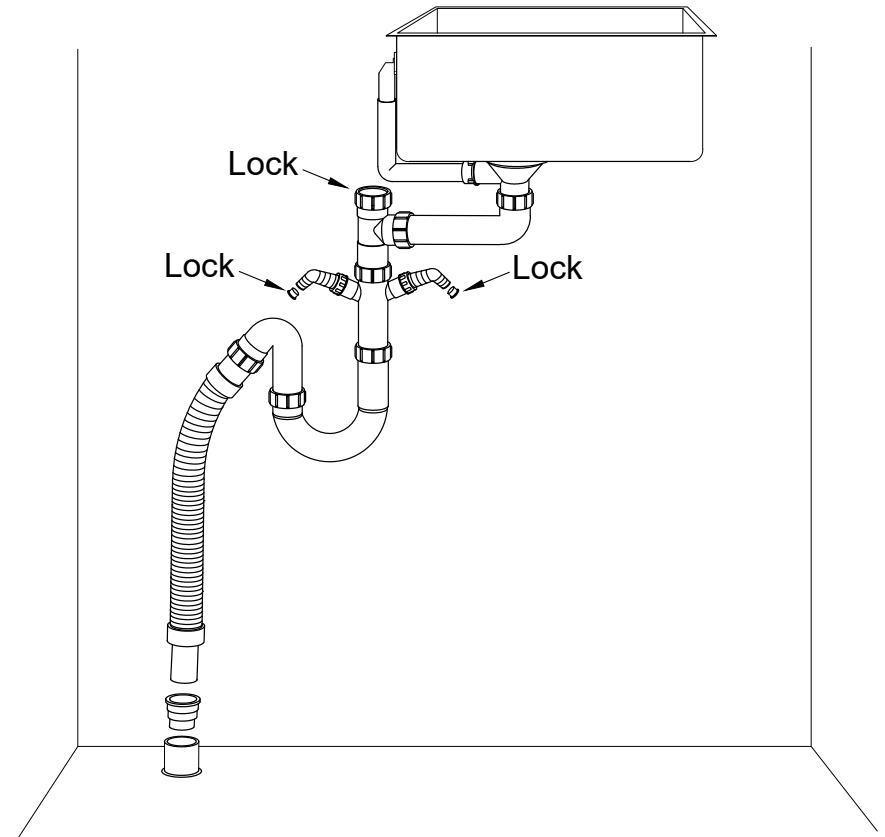
# Cube180



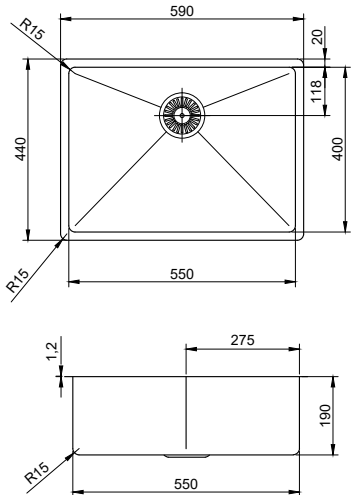
# Cube500



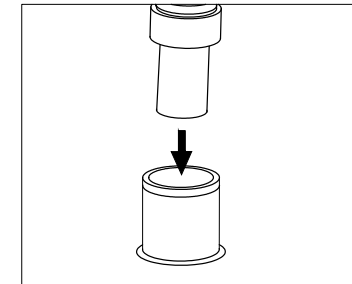
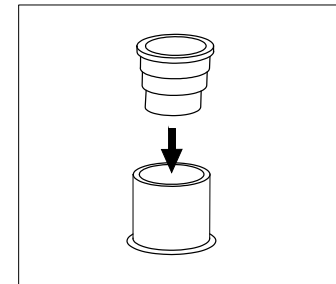
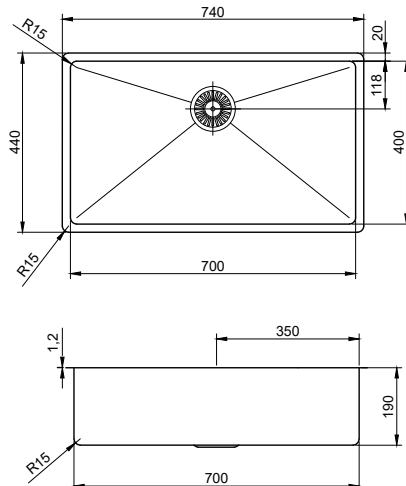
## Connect supplies & drain fittings



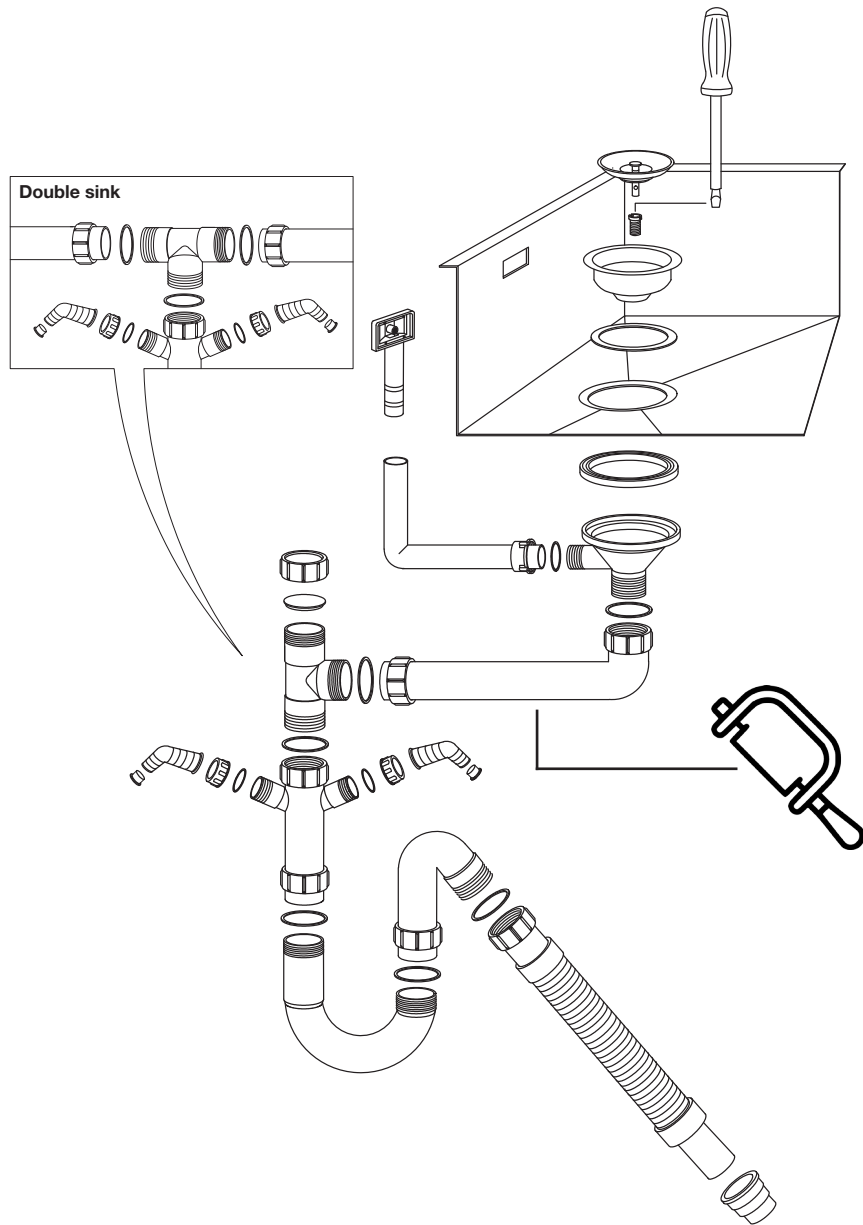
# Cube550



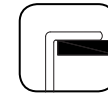
# Cube700



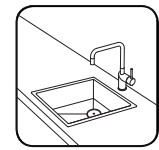
# Connect supplies & drain fittings



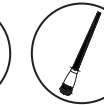
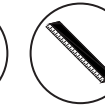
Flush-Mount



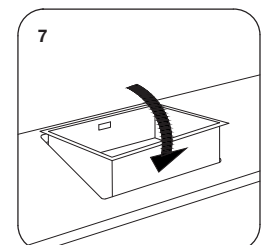
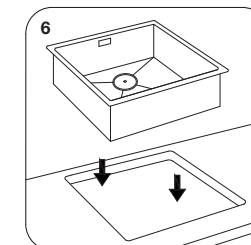
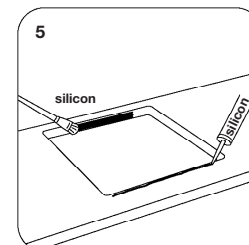
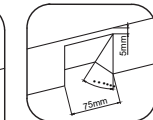
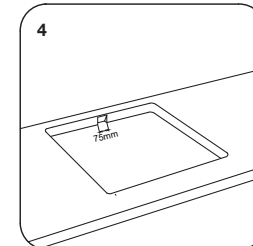
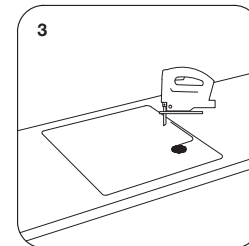
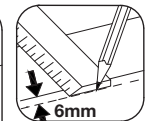
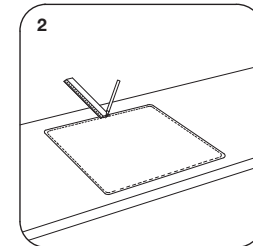
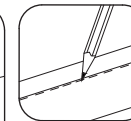
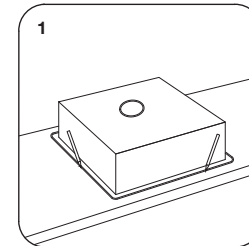
Top-mount



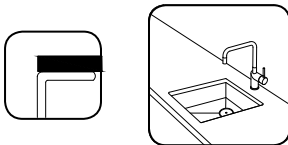
NEEDED TOOLS



PLEASE NOTE: drawings are not to scale.  
They are to assist only.



## Undermount

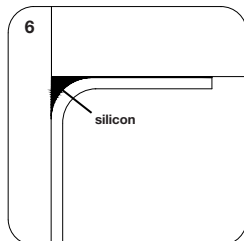
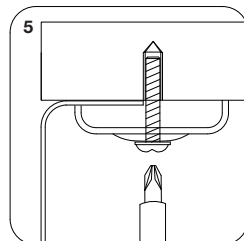
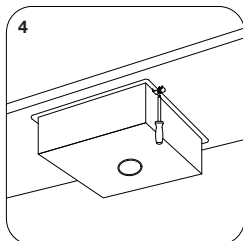
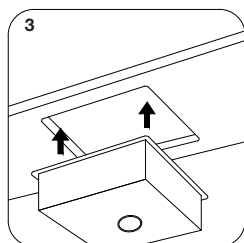
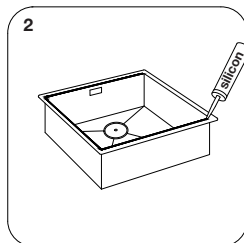
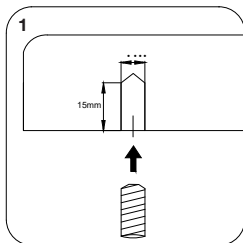


### NEEDED TOOLS



**Undermount installation** For the undermount sinks, proceed as for the normal built-in sinks. Make a cut-out on the worktop following the template and/or instructions provided with the sink. Before installing the sink, seal with silicone. Tighten the brackets.

**PLEASE NOTE:** drawings are not to scale.  
They are to assist only.



## Connect supplies & drain fittings

