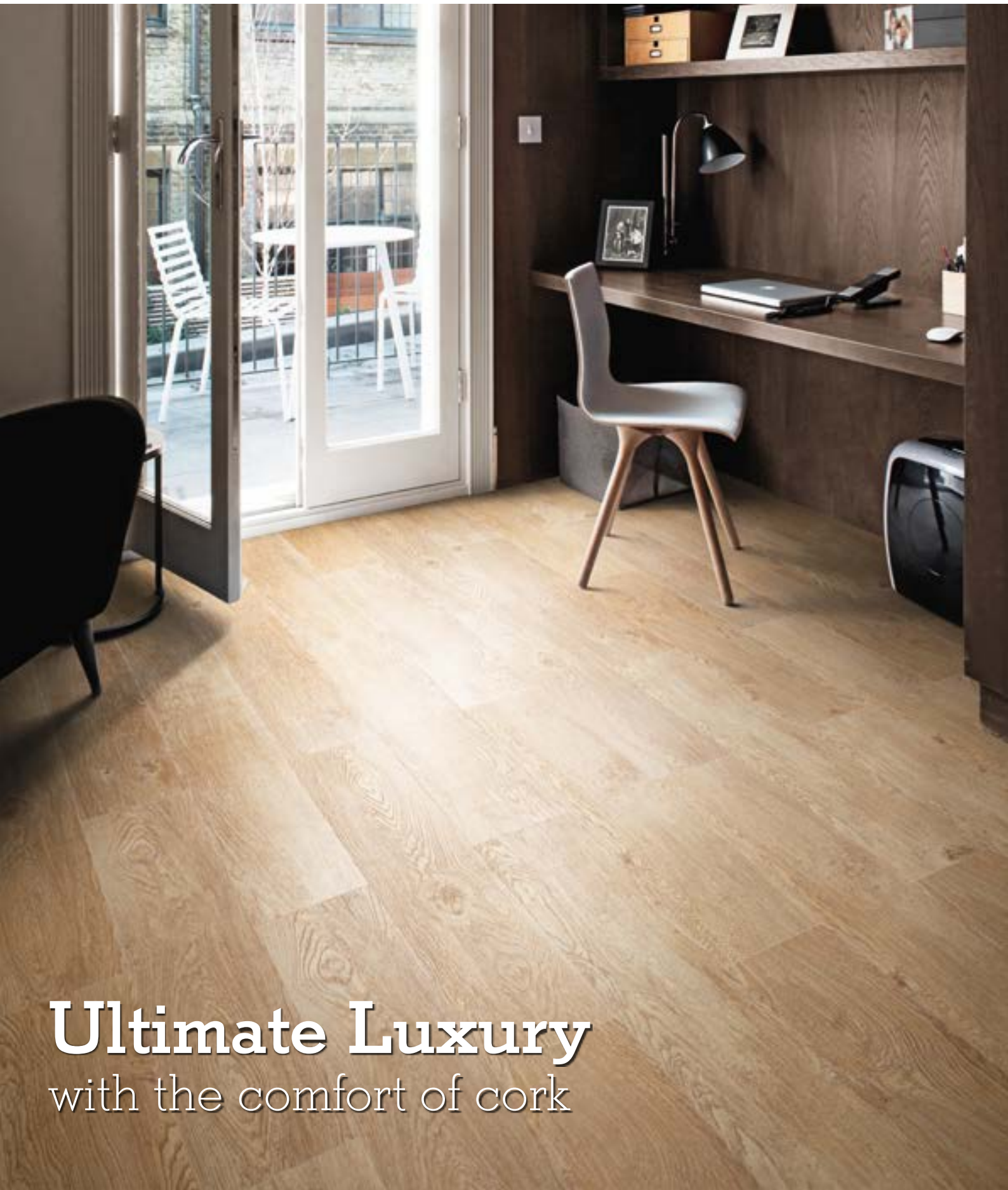




**WICANDERS®**

Nature at your feet

Vinylcomfort



**Ultimate Luxury**  
with the comfort of cork



Cork is a natural material that comes from the bark of the cork oak tree, with unique and incomparable qualities that no ingenious human has yet managed to copy or improve. Its cell structure resembles a honeycomb, enabling it to act as a natural thermal and sound insulator and also providing shock absorbing properties.

These exclusive qualities of cork make it ideal to use in flooring, as it grants an exceptional comfort while also being a renewable and sustainable resource.



Over the years, Wicanders has developed floor and wall coverings with exclusive properties due to its innovative Corktech technology.

By using a unique engineered multilayer structure, which combines state of the art technology with the exclusive natural properties of cork, a higher standard in flooring was achieved, providing the perfect match between beauty, comfort and durability.

**Vinyl**comfort floors accomplish the ultimate luxury with highly detailed vinyl designs that result in realistic and sophisticated reproductions of wood and stone textures.

The uniqueness of **Vinyl**comfort floors was achieved by integrating a prime quality core layer of cork, which provides superior comfort, noise reduction and warmth. An integrated cork underlay reinforces thermal and acoustic properties, resulting in a silent environment and important energy cost savings.



Wear layer with embossed texture

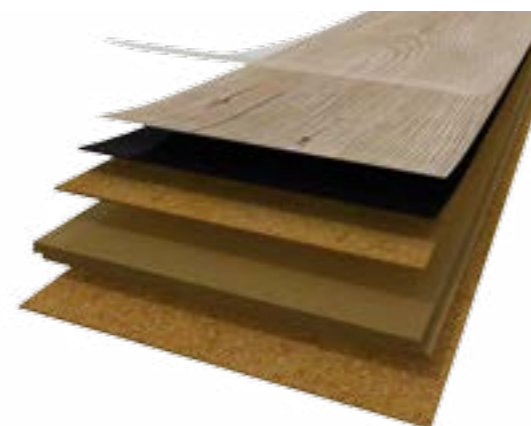
High resolution printed film

Solid vinyl core

Agglomerated cork  
Step sound reduction,  
warmth & comfort

High density fiberboard

Insulating cork underlay  
Impact sound reduction,  
& thermal reinforcement



# MORE THAN JUST A BEAUTIFUL FLOOR



## + SILENCE

Cork's natural properties make it an excellent sound absorber. **Vinyl**comfort floors reduce noise transmission between and within rooms, creating a quieter and peaceful environment.



## + NATURAL THERMAL INSULATION

The unique thermal insulation features of cork provide an optimal floor temperature all year round, assuring a more warm and comfortable ambiance with energy cost savings.



## + WALKING COMFORT

**Vinyl**comfort floors are very comfortable to walk on due to cork's natural and inherent flexibility providing a unique comfort in movement. Even when walking barefoot, a sense of cosiness is felt.



## + BODY WELLNESS

Softer than wood and harder than carpets, the perfect mix to absorb heel strike impacts, relieving leg and back stress, but stable enough to help the foot impulse and decrease the walking fatigue.



## + IMPACT RESISTANCE

**Vinyl**comfort floors have the ability to bounce back from hard impacts, which makes them very robust and increases the life span of the flooring.

## Realistic & Durable

The remarkable enduring beauty

## Warm & Comfortable

Feel a warm and pleasant touch under your bare feet

## Quiet & Healthy

Improve quality of life



**Ultimate Luxury**  
with the comfort of cork

# The sublime balance of Vinyl with Cork flooring

The sublime balance was achieved. This contemporary technology combines the luxury of vinyl designs with the unique comfort of cork, accomplished with an excellent reproduction of natural textures.

The realistic wood and stone visuals of this collection, with all the benefits of cork inside, are the perfect choice to create comfortable, warmth and peaceful atmospheres.

### Floating solution

With the glueless Corkloc® installation system, simply put the planks together and securely click them into place. It is a very quick, safe and clean solution.

The stone visuals are available in a board format of 905 x 295mm (35 5/8 x 11 5/8"). All the wood visuals are available in the elegant plank of 1220 x 185mm (48 x 7 1/4").

**Protective wear layer** 0,3mm or 0,55mm, with embossed texture Easy maintenance & extra resistance

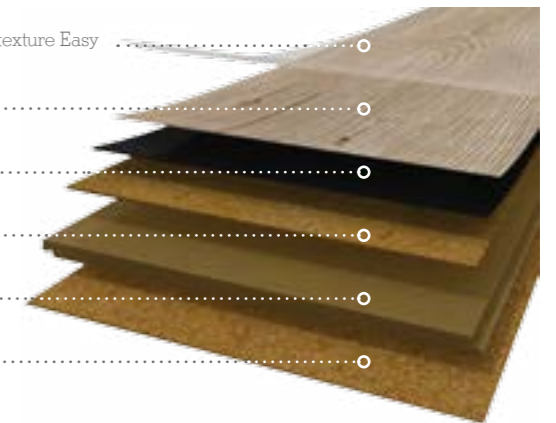
**High resolution printed film** Decorative visual

**Solid vinyl layer** 1,2mm Structural layer

**Agglomerated cork** 1,5mm Step sound reduction, warmth & comfort

**HDF - High Density Fiberboard with Corkloc®** 6mm Quick & easy installation

**Integrated cork underlay** 1,2mm Impact sound reduction & thermal reinforcement



### 0,3 mm wear layer

For residential and light commercial areas



### 0,55mm wear layer

For heavy commercial traffic areas



# Natural realistic look!

## Rich textures for an intense and natural realism

Specific surface textures were developed in order to offer a remarkable realism for every type of floor. Smooth, grained or brushed – inspired by the most traditional wood & stone working techniques – **Vinylcomfort** floor touches your desire with its luxurious look.



**White Oak**  
BOM8001 - 1220 x 185 x 10,5mm | **Floating 0,3mm wear layer**



**Elegant Oak**  
BOR4001 - 1220 x 185 x 10,5mm | **Floating 0,55mm wear layer**



**Bark Oak**  
BOV8001 - 1220 x 185 x 10,5mm | **Floating 0,3mm wear layer**



**White Ceramic**  
BOP8001 - 905 x 295 x 10,5mm | **Floating 0,3mm wear layer**



**Sand Oak**  
BOR1001 - 1220 x 185 x 10,5mm | **Floating 0,55mm wear layer**



**Wheat Pine**  
BOR3001 - 1220 x 185 x 10,5mm | **Floating 0,55mm wear layer**



**Brume Oak**  
BON8001 - 1220 x 185 x 10,5mm | **Floating 0,3mm wear layer**



**Beige Ceramic**  
BOP9001 - 905 x 295 x 10,5mm | **Floating 0,3mm wear layer**



**Alaska Oak**  
BOQ0003 - 1220 x 185 x 10,5mm | **Floating 0,3mm wear layer**



**Frozen Oak**  
BON9001 - 1220 x 185 x 10,5mm | **Floating 0,3mm wear layer**



**Platinum Oak**  
BOM6001 - 1220 x 185 x 10,5mm | **Floating 0,3mm wear layer**



Synchronized perfection of wood grain and knots

## Authentic embossed texture for a natural look and feel

With the registered embossing revolutionary technology, Wicanders is able to perfectly synchronize impressive surface textures to each luxurious design intensifying the feeling of depth. The result is a high quality floor where the natural textures can hardly be told apart from real materials. Four amazing designs were created to suit all kind of styles.

# Light shades

## Creating light and space

The light shades bright up and amplify spaces, providing a pure and serene atmosphere. Due to its extreme versatility it is the perfect choice for the base of modern decorations.



**Wheat Pine**  
B0R3001 - 1220 x 185 x 10,5mm | Floating 0,55mm wear layer



Sand Oak



**Sand Oak**  
B0R1001 - 1220 x 185 x 10,5mm | Floating 0,55mm wear layer



Wheat Pine



### Expressive contrasts

The expressive contrasts, are a perfect choice to create an unique and astonishing organic look, with unique effects and nuances, that will enrich interior atmospheres.



**Frozen Oak**  
B0N9001 - 1220 x 185 x 10,5mm | Floating 0,3mm wear layer

**Modern Rustic**

The Modern Rustic light visuals are perfect to create a casually elegant decor with a harmonious and welcoming interior.



White Oak



**White Oak**  
B0M8001 - 1220 x 185 x 10,5mm | Floating 0,3mm wear layer



**Alaska Oak**  
B0Q0003 - 1220 x 185 x 10,5mm | Floating 0,3mm wear layer



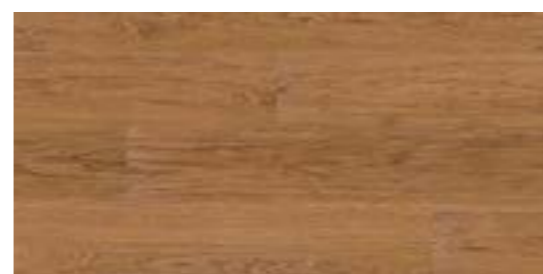
Alaska Oak



## Natural shades

Create an ambiance of total relaxation

The natural look of classic and neutral shades opens the door to a timeless beauty. Genuinely classic or freely modern, you'll breathe peace and tranquility in an ambiance with natural wooden designs.



Elegant Oak

BOR4001 - 1220 x 185 x 10,5mm | Floating 0,55mm wear layer





**Bark Oak**  
B0V8001 - 1220 x 185 x 10,5mm | Floating 0,3mm wear layer

# Intense Grey shades

## The foundation of a strong character

A grey gradient floor gives a strong statement to your space whatever style of living and furnishing you may choose. Among the dark grey floors you'll emphasize your avant-garde taste, creating individual and expressive vibrations.



**Brume Oak**  
B0N8001 - 1220 x 185 x 10,5mm | Floating 0,3mm wear layer



**Platinum Oak**  
B0M6001 - 1220 x 185 x 10,5mm | Floating 0,3mm wear layer



Brume Oak

# Stones essence

## An authentic experience

Stone patterns have the essence of a Mediterranean look and a fine grained touch. The most charming details of a stone, complemented with the unique advantages of cork, invite you to enjoy the stunning effect of a comfortable laid stone floor.



**White Ceramic**  
B0P8001 - 905 x 295 x 10,5mm | Floating 0,3mm wear layer



**Beige Ceramic**  
B0P9001 - 905 x 295 x 10,5mm | Floating 0,3mm wear layer

White Ceramic

# Get the best results with **Wicanders' accessories!**

## Underlays

### Increased comfort and insulation

To reinforce the already amazing insulation properties of cork flooring, Wicanders provides Acousticork, a cork underlay which lets you turn your home into an even cosier space.

Acousticork increases the walking comfort, and also reduces the noise and the heat dispersion. Overall, it makes rooms cosier and more peaceful, which are essential in making any house feel homey.

It is available in two options: agglomerated cork and agglomerated cork with a moisture barrier.

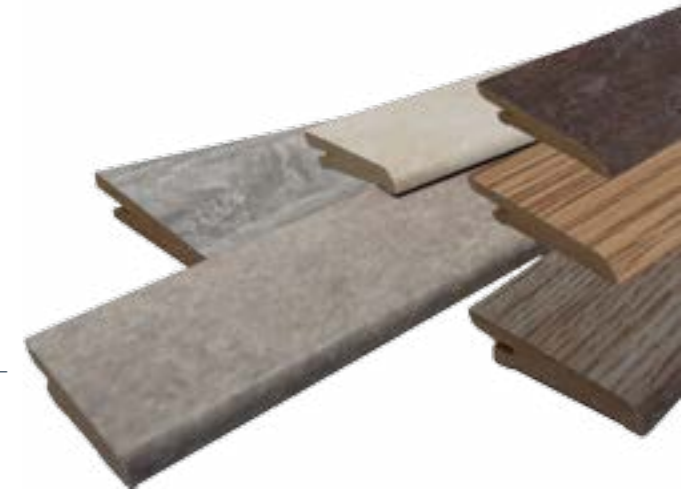


- **High durability and long term resilience**
- **Increases floor thermal insulation**
- **Natural and sustainable product**
- **Easy to handle and install**

## Skirtings

### The perfect match to make a pleasant interior

In order to help to create a more classy and harmonious interior, Wicanders provides skirting profiles to complement your floor. Create your ideal transition between the walls and the floor, whether by an exact match or contrasting colors. There are skirting profiles available for the complete range of **Vinylcomfort** products. Contact your supplier for information on the available skirting references.



## Maintenance

### Optimal care for an everlasting beauty

To keep your floor spotless, Wicanders has available a set of auxiliary products. Each of these has a specific purpose and is designed to make the caring of your floor as easy as possible.

REGULAR MAINTENANCE



#### Wicanders Soft Cleaner

This mild detergent is appropriate for weekly or even daily cleaning. It can be used to remove dirt, stopping it from infiltrating in the joints and in the embossing of the product.



#### Wicanders Spray Cleaner

Designed for regular cleaning, this mild detergent has the advantage of being a spray, which makes it a quick and easy solution to apply directly on the floor. It is very effective in cleaning dirt or grease stains.

PERIODIC MAINTENANCE



#### Wicanders Power Polish

This product is used for periodic maintenance, giving added protection to the floor due to its strong cleaning power. It helps to keep the floor's appearance intact over the years and is especially important to use in high traffic areas.



#### Wicanders Power Strip

The Power Strip is used to clean persistent dirt and to remove old maintenance products, since the accumulation of too many coats of these products can make the floor have an unpleasant look.



# Why is Wicanders cork flooring the perfect choice?

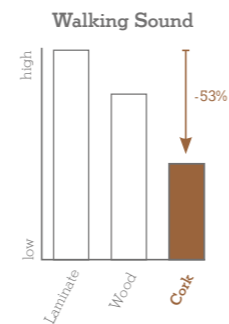


## + SILENCE

Thanks to the acoustic insulation provided by cork, Wicanders floors can easily cut noise within and between rooms.

Comparing the walking sound between cork and laminate floors, tests confirm that cork floors have an exceptional result reducing the sound up to 53%.

Study run by Entwicklungsund Prüflabor Holztechnologie gmbH (EPH) in Germany according to IHD-W 431.

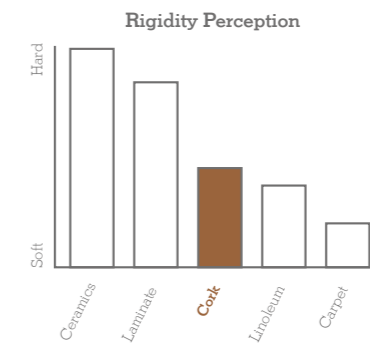


## + BODY WELLNESS

Wicanders floors are stable enough to avoid the leg and back stress that is generated by walking on too hard or too soft floors.

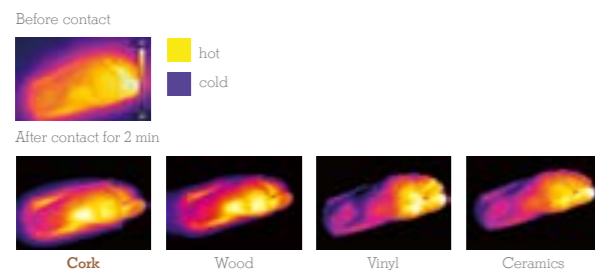
Softer than laminate and harder than carpets, Wicanders cork floors are the perfect mix to reduce heel strike impacts and related body tensions, but stable enough to help the foot impulse and provide the needed stability to reduce effort on walking and decrease body fatigue.

Study run by IBV biomechanical institute in Valencia, Spain.



## + NATURAL THERMAL INSULATION

Infrared foot temperature



The natural thermal properties of cork make Wicanders floors very energy efficient, providing an optimal temperature all year round.

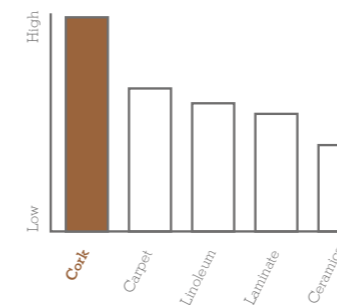
When testing foot temperature in contact with four different materials, cork floors stand out as being the best solution to retain heat.

Better than wood and by far better than ceramic when it comes to avoid energy dispersion.

Study run by IBV biomechanical institute in Valencia, Spain.

## + IMPACT RESISTANCE

Shock Absorbing



Due to cork's resilience and elasticity, Wicanders floors have the ability to bounce back from hard impacts.

Tests show that Wicanders cork floors have the highest shock absorbing performance.

When an object accidentally falls in a cork or in a laminate floor, different results come through.

Study run by IBV biomechanical institute in Valencia, Spain.

## + WALKING COMFORT

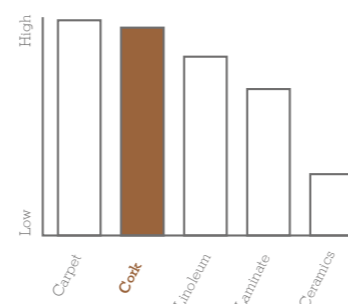
Cork floors are very comfortable to walk on, due to cork's natural and inherent flexibility, providing a unique comfort in movement.

When testing the level of comfort perception of people walking for 45 minutes over five different materials, results show that Wicanders cork floors have a great outcome.

With high comfort perception, it outperforms linoleum, laminate and ceramic floors.

Study run by IBV biomechanical institute in Valencia, Spain.

Comfort Perception



### Fast & Easy Installation

Floating floors with CorkLoc® system are easier and faster to install.



### Low & Easy Maintenance

The special surface finishing of Vinylcomfort floors make them easier to clean and maintain.



### Sustainable

Cork comes from the bark of the cork oak tree. It is removed from the trunk by hand without ever damaging the tree. Every year a new bark grows making it a renewable and sustainable resource.



# Think green choose Wicanders®

Wicanders® is a truly sustainable brand! Produced by Amorim, it represents a unique balance between the creation of wealth and the protection of the environment. The starting point is a raw material that is extracted cyclically from the cork oak trees without ever damaging them. This raw material is then transformed into high value-added products while promoting the economic and social sustainability of areas at risk of desertification.

Several eco-efficiency studies, based on a comparative analysis with several other types of flooring, illustrate the excellent environmental performance of Wicanders® products and its manufacturing process. Besides the smaller amounts of energy and raw materials required for the manufacturing process, these products actively contribute to reducing global warming, not only through their low emissions, but also due to cork's natural property of retaining CO<sub>2</sub>.

It is estimated that the Portuguese cork oak forest – montado – is responsible for retaining 5% of the country's annual CO<sub>2</sub> emission, representing 4.8 million tons per year.



## The importance of Cork Oak

The Cork Oak (*Quercus Suber L.*) is a tree belonging to the Oak family from which Cork is extracted. Its value is based not only on the products extracted from the tree, but on all of the agricultural, forest, pastoral and hunting activities that revolve around the cultivation of the Cork Oak.

Regular extraction of the Cork (a process called stripping) is a fundamental contribution for environmental, economic and social sustainability in the rural areas of the Mediterranean region where the Cork Oak may be found.

The Cork tree is a slow growing tree, which may live for 200 years, which allows it, on average, to be stripped 16 times during its lifetime. The first extraction of cork from the Cork Oak tree occurs only 25 years after planting, following which it is harvested in 9 year cycles, without ever damaging the tree in any way. This method allows the cork oak forest to fulfill its role of fixing CO<sub>2</sub>, thus actively contributing to reduce global warming.

The Cork forest in Portugal (700.000 hectares), known as "Montado", is a typical Iberian Landscape which is key in supporting a natural bio-diversity, including some of the most endangered species in the world: Iberian Lynxes, Imperial Eagles, Black Storks, Wolves and Wild Bears.



# A GIFT FROM NATURE



Greenguard Certification helps the identification of interior products and materials that have low chemical emissions, improving the quality of the air in which the products are used. It promotes global sustainability, environmental health, and safety.



As of January 2012, France has adopted regulations that limit total VOC emissions of building products. Manufacturers, selling their products in France must obtain a classification ranging from A+ (very low emissions) to C (high emissions). The declared goal is to improve indoor air quality in private/ commercial buildings.



An Environmental Product Declaration is a verified document that reports environmental data of products based on life cycle assessment and other relevant information in accordance with the international standard ISO 14025.

## Product Selector

		Vinylcomfort Floating		
		0,3mm Wear Layer		0,55mm Wear Layer
		32	32	33
Class of Use (ISO 10874)				
Thickness (mm)		10,5	10,5	10,5
Dimension (mm)		905 x 295	1220 x 185	1220 x 185
Embossing		Yes	Yes	Yes
Beveling		No	No	4 sides
Wood	Textures			
Linen Cherry	Fine pore wood			BOR0001
Sand Oak	Brushed wood			BOR1001
Light Beech	Fine pore wood		BOT0003	BOT0002
Wheat Pine	Brushed wood			BOR3001
Frozen Oak	Brushed wood		BON9001	
Nordic Ash	Fine pore wood			BOV4001
White Oak	Brushed wood		BOM8001	
Alaska Oak	Brushed wood		BOQ0003	
Shell Oak	Brushed wood			
Claw Silver Oak	Brushed wood			BOV3001
Limed Grey Oak	Fine pore wood			BOT7001
Rustic Limed Gray Oak	Brushed wood			BOU0001
Castle Toast Oak	Authentic embossed texture			BOP1001
Castle Raffia Oak	Authentic embossed texture			BOP0001
Arcadian Soya Pine	Authentic embossed texture			BOP4001
Arcadian Rye Pine	Authentic embossed texture			BOP5001
Sawn Twine Oak	Authentic embossed texture			BOP2001
Sawn Bisque Oak	Authentic embossed texture			BOP3001
Amber Cherry	Fine pore wood		BOQ7003	
Chalk Oak	Brushed wood		BOQ1003	
Provence Oak	Brushed wood		BOQ3003	
Elegant Oak	Fine pore wood			BOR4001
Nature Oak	Fine pore wood			BOT5001
Blonde Oak	Brushed wood			
European Oak	Brushed wood		BOQ2004	
Light Sucupira	Fine pore wood		BOQ9001	
Croft Oak	Brushed wood		BOV9001	
Bark Oak	Brushed wood		BOV8001	
Tobacco Pine	Brushed wood			BOR6001
Smoked Rustic Oak	Brushed wood			BOU4001
Century Fawn Pine	Authentic embossed texture			BOP7001
Century Morocco Pine	Authentic embossed texture			BOP6001
Brume Oak	Brushed wood		BON8001	
Storm Oak	Brushed wood			
Platinum Oak	Fine pore wood		BOM6001	
Cinder Oak	Brushed wood			BOR7001
Stone				
White Ceramic	Moonscape stone		BOP8001	
Beige Ceramic	Moonscape stone		BOP9001	
Volcanic Ash	Grained stone		BOQ3001	
Coal Slate	Sliced stone		BOQ1001	

## Technical Data Sheet

			Vinylcomfort Floating	
			0,55mm Wear Layer 1220 x 185 x 10,5mm 48 x 7 1/4 x 3/8'	0,3mm Wear Layer 1220 x 185 x 10,5mm 48 x 7 1/4 x 3/8' 905 x 295 x 10,5mm 35 5/8 x 11 5/8 x 3/8'
Level of use Domestic	ISO 10874	Class	23 	23 
Level of use Commercial	ISO 10874	Class	33 	32 
	Standard-Test Method	Unit	Specification EN 14085 + EN 649	Specification EN 14085 + EN 649
General properties				
Dimensions	ISO 24342	mm	± 0,10% up to width: max. 0,5 mm length: max. 2,0 mm	± 0,10% up to width: max. 0,5 mm length: max. 2,0 mm
Overall thickness	ISO 24346	mm	± 0,25	± 0,25
Straightness measured at the surface layer	ISO 24342	mm	≤ 0,30	≤ 0,30
Squareness	ISO 24342	mm	≤ 0,50	≤ 0,50
Apparent density	EN 672	Kg/m <sup>3</sup>	Nominal value (960) ± 50	Nominal value (900) ± 50
Mass per unit area	ISO 23997	g/m <sup>2</sup>	Nominal value (10150) - 10 % + 13%	Nominal value (9800) - 10 % + 13%
Dimensional stability (humidity)	EN 669 (Annex C)	mm	≤ 5	≤ 5
Dimensional stability (heat)	EN 14085 Annex C / EN 669	%	-	-
Openings between panels	EN 14085 (Annex B)	mm	≤ 0,20	≤ 0,20
Height difference between panels	EN 14085 (Annex B)	mm	≤ 0,20	≤ 0,20
Flatness of the panel (Length - Concave / Convex)	EN 14085 (Annex A)	%	≤ 0,50 / ≤ 1,0	≤ 0,50 / ≤ 1,0
Flatness of the panel (Width - Concave / Convex)	EN 14085 (Annex A)	%	≤ 0,10 / ≤ 0,15	≤ 0,10 / ≤ 0,15
Residual indentation	ISO 24343-1	mm	≤ 0,15	≤ 0,15
Colour fastness	ISO 105-BO2	Blue wool scale	≥ 6	≥ 6
Classification properties - EN 655 + EN 649 + EN 14085				
Wearing Group	EN 660-1	Thickness loss (Δ lmm)	Wear group T	Wear group T
Overall thickness (Vinyl + Cork layer)	ISO 24346	mm	≥ 3,0	≥ 3,0
Thickness of wear layer (Wear Group T)	ISO 24340	mm	≥ 0,55	≥ 0,3
Castor chair	EN 425	Visual effect - after 25 000 cycles	No disturbance to the surface other than slight change in appearance and no delamination shall occur	No disturbance to the surface other than slight change in appearance and no delamination shall occur
Simulated movement of a furniture leg	EN 424	Visual effect	No damage shall be visible after testing with a type 2 foot	No damage shall be visible after testing with a type 2 foot
Safety properties - EN 14041				
Fire resistance	EN 13501-1	Class	Bfl s1	Bfl s1
Slip Classification	EN 13893	Class	DS	DS
Formaldehyde emission	DIN EN 717-1	Class	E1	E1
Electrical behaviour	EN 1815	kV	Antistatic	Antistatic
Content pentachlorophenol (PCP)	CEN/TR 14823 (hd-W 409)	mg/Kg	PCP free	PCP free
	EN 14041 Annex B	%	-	-
Additional properties				
Stains Resistance	ISO 26987 (a)	Grade	Grade 0 (b) *	Grade 0 (b)
Thermal resistance	EN 12667	(m <sup>2</sup> K)/W	0,093	0,104
Impact sound reduction	ISO 140-8	dB (Δ Lw)	16	16
Step sound/ Step sound reduction	NF S 31 - 074	L <sub>n,e,w</sub> (dB)/ΔE <sub>ρw</sub> (dB)	81	81
Walking noise	IHD - W431	dB (A)	Reduction improvement 11,4 dB(A) Difference of loudness 45,4%	Reduction improvement 11,4 dB(A) Difference of loudness 45,4%

(a) The following products were tested: Desinfectant, C2H5OH, NH4OH, Citric acid, iodine, petroleum, spirit  
 (b) Grade 0 - Unchanged / Grade 1 - Very little change / Grade 2 - Little change / Grade 3 - Change / Grade 4 - Strong Change  
 \* Except Iodine - Grade 2 - Little change



Produced by Amorim, the worldwide market leader in cork products, Wicanders matches nature's most pure values with avant-garde technologies to provide high quality, ecologic and stylish flooring. Wicanders has an unsurpassed reputation for developing high

standard and unique comfortable flooring solutions, following the latest decoration tendencies and targeting both residential and commercial market segments.

Wicanders is truly a sustainable brand!

[www.wicanders.com](http://www.wicanders.com)

